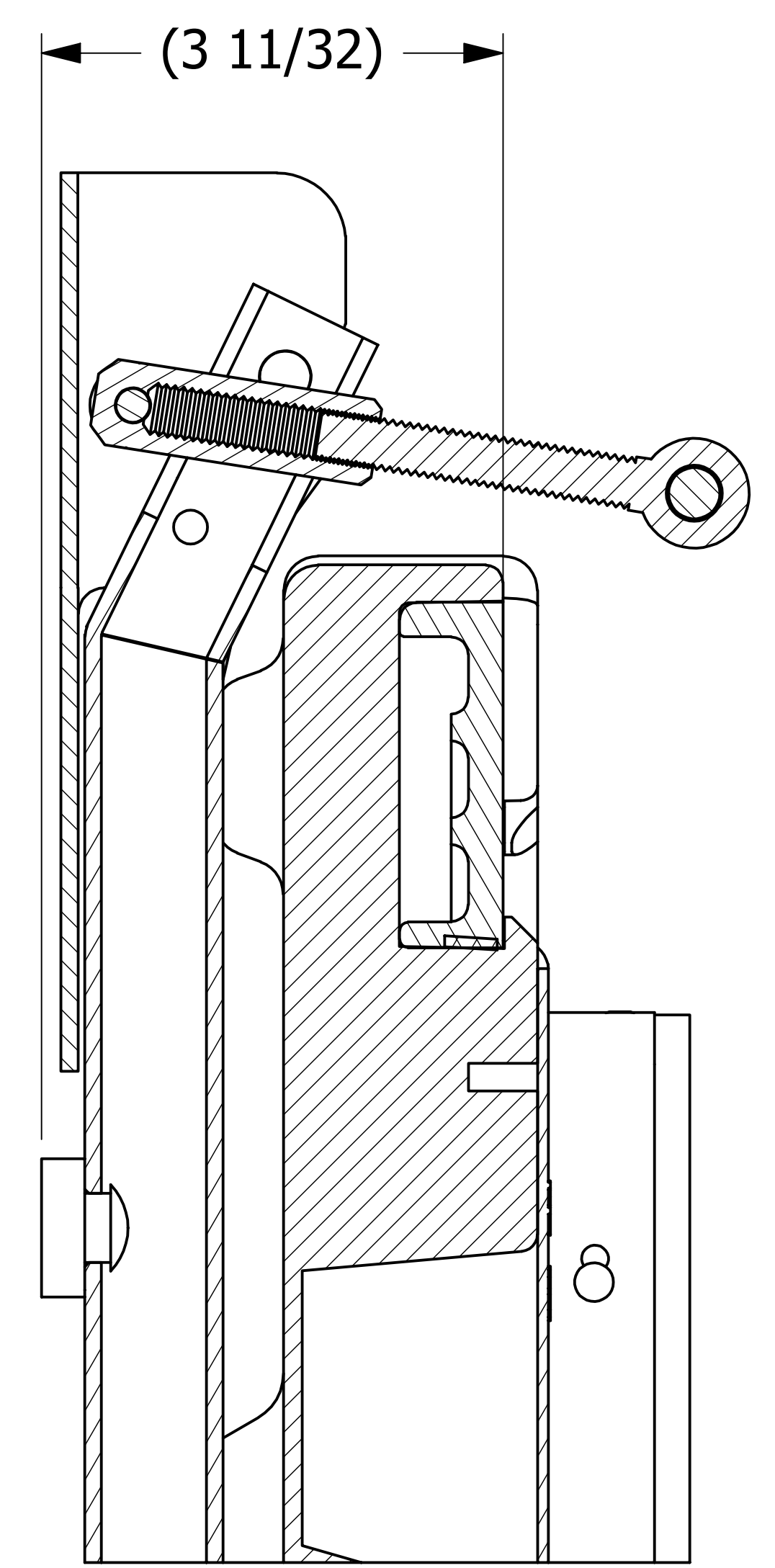
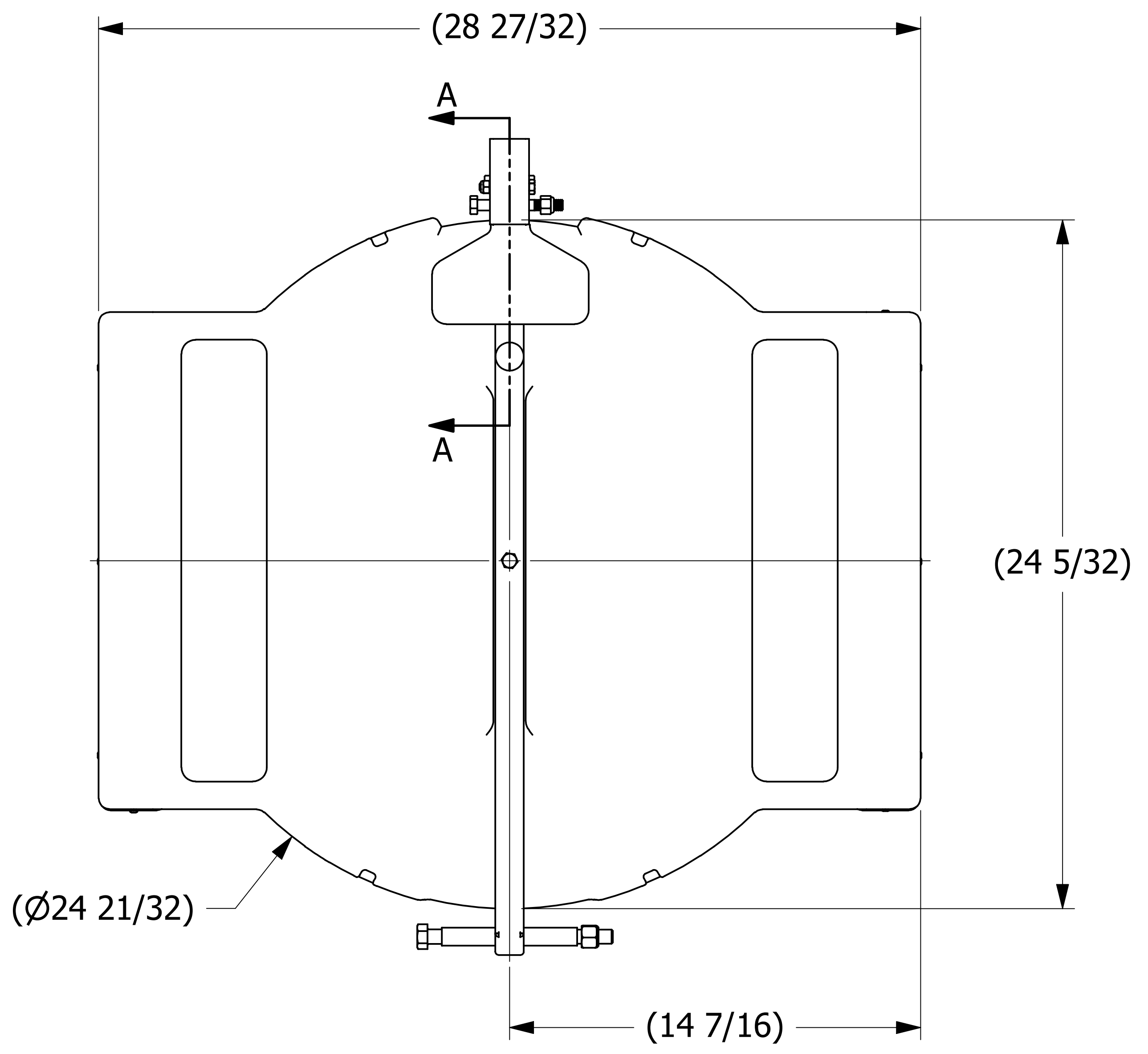
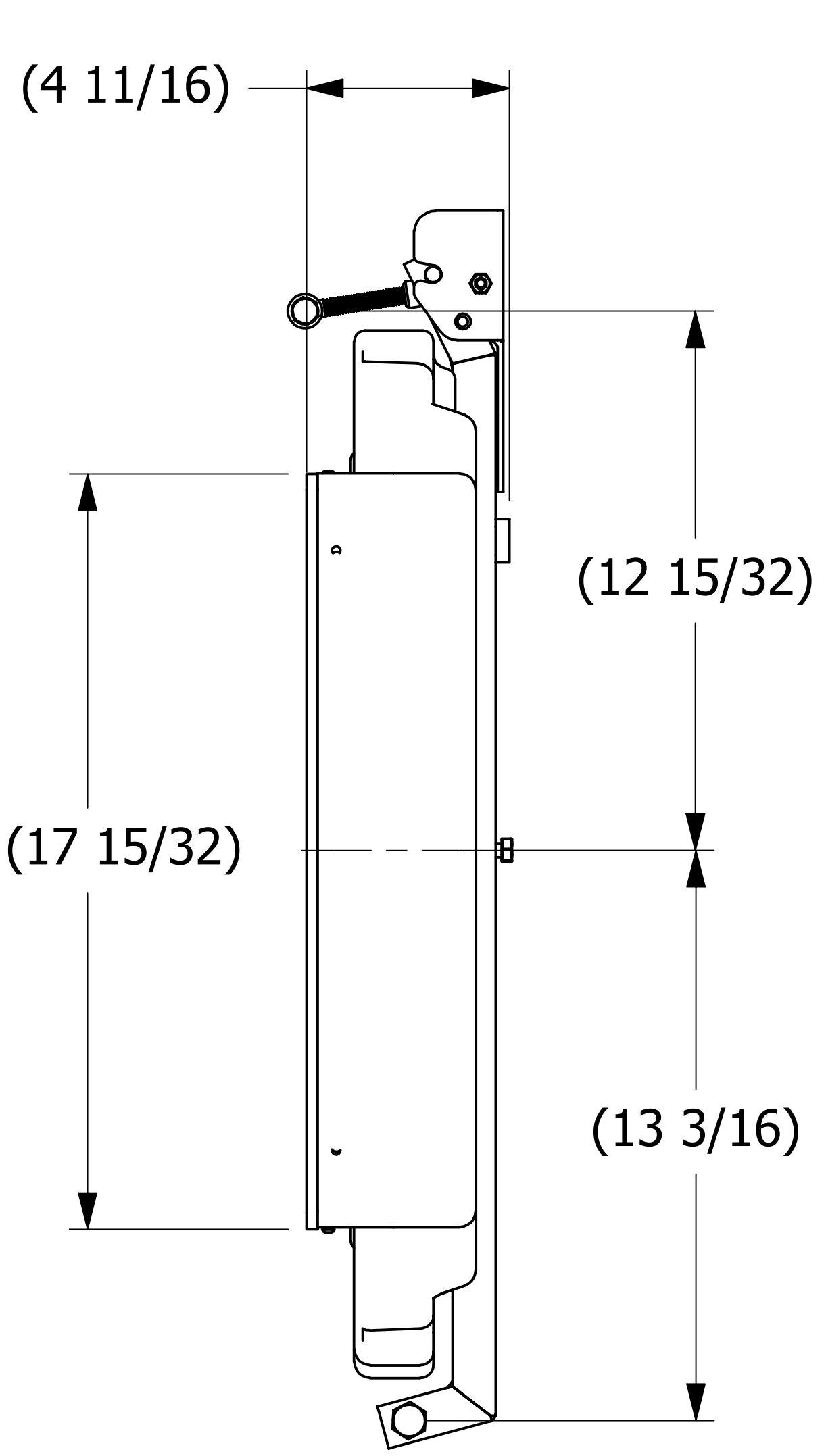
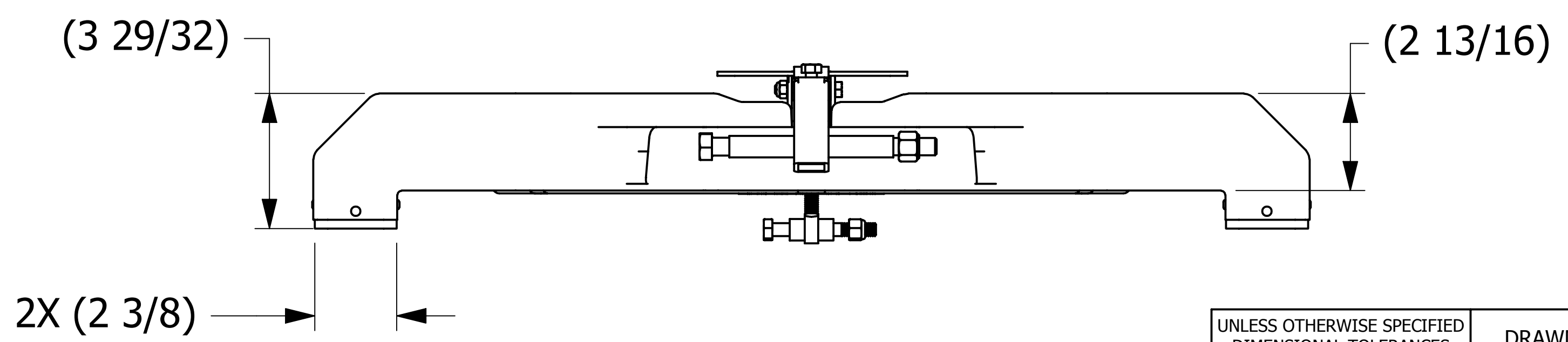


SALES DRAWING

SALES DRAWING



SECTION A-A
SCALE 1:1



D	WEB	5-20-14	REPLACED ATH20SCAW WITH ATH20SCAB
C	RJP	1-03-14	ROTATED ARM
B	RJP	1-03-14	ADDED SHEET 2 WITH DIMENSIONS
A	CHL	7-28-10	NEW PART ADDED TO SYSTEM
REV	BY	DATE	DESCRIPTION

UNLESS OTHERWISE SPECIFIED DIMENSIONAL TOLERANCES FRACTIONAL: ±1/16 X.XX: ±.03 X.XXX: ±.015 ANGULAR: ±1° DEBURR ALL SHARP EDGES. ALL MACHINED SURFACES TO HAVE A 125 RMS FINISH UNLESS NOTED OTHERWISE. THIRD ANGLE PROJECTION	DRAWN BY:	CHL
	CHECKED BY:	PJG
	PROTOTYPE BY:	CHL
	PROTOTYPE DATE:	2/2/2004
	APPROVED FOR PRODUCTION BY:	PJG
PRODUCTION DATE:	7/28/2010	

SALCO PRODUCTS, INC.		
PART NAME: VENTED HATCH COVER 20"		
MATERIAL: HDPE/SS	PROJECT #: WAG0095	SHEET #: 1 OF 1
DRAWING #: D18795	PART #: VHCS98TH95B	SCALE: 1:3

THIS PRINT, PROPERTY OF SALCO PRODUCTS INC. CONTAINS PROPRIETARY INFORMATION AND MUST NOT BE COPIED, REPRODUCED, OR USED DETRIMENTALLY TO OUR INTEREST.